

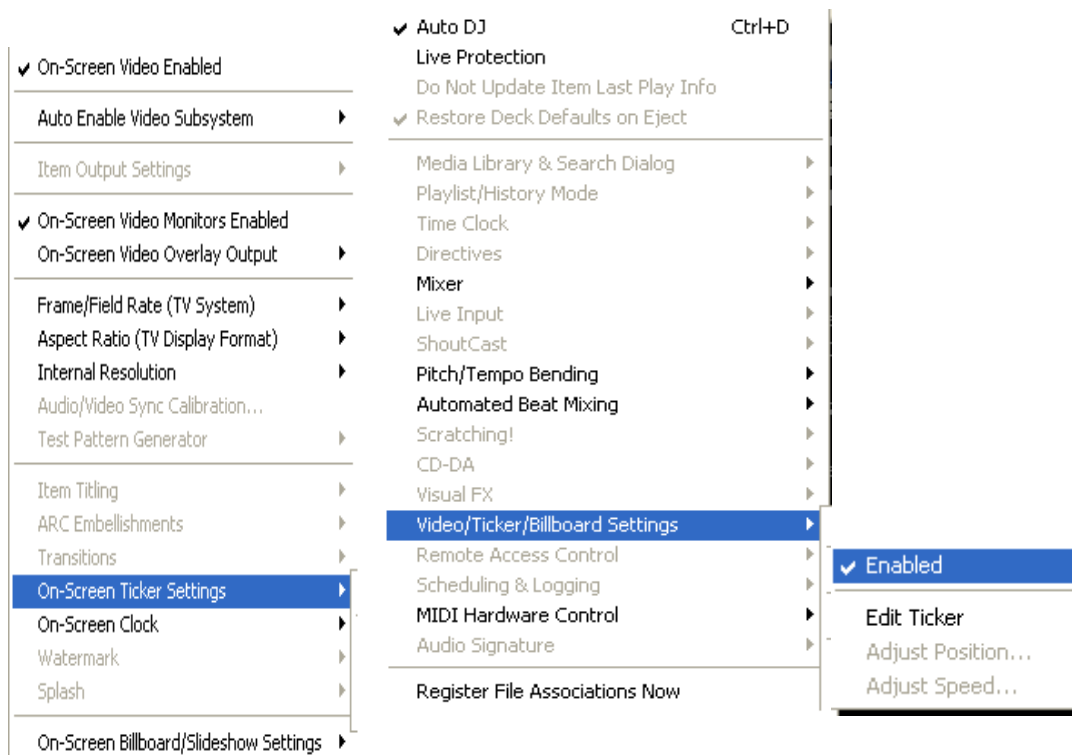
Video System Instructions

Have a look at the standard instructions and the Advanced Instructions if you are a DJ. Below are more details if you have an AMS Video Music System.

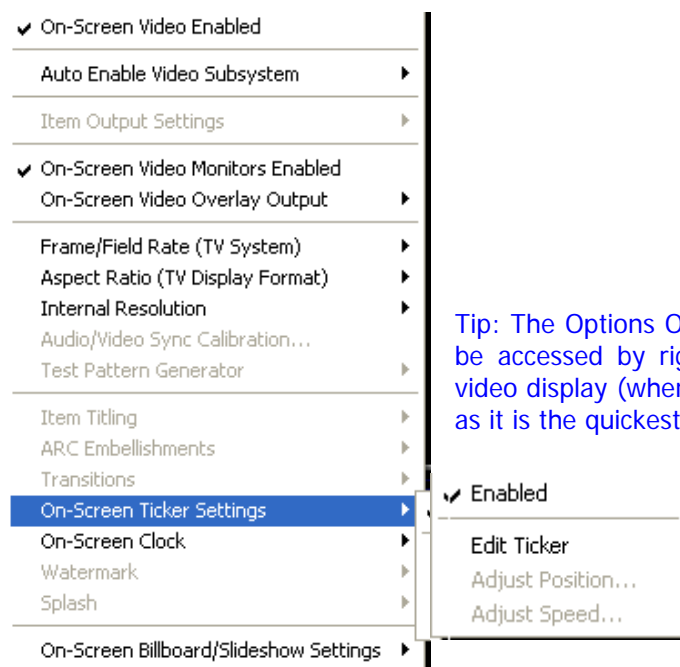
Ticker

Your AMS Music System can display a scrolling ticker across the bottom of your TV Screens, similar to what you might see on a news broadcast. The ticker can be used to display any text you wish, such as Happy Birthday! Happy Hour until 10pm, or Susan to the stage to sing next. You can have multiple messages in the ticker, each of which can be enabled or disabled. Symbols can also be added to the text to enhance the messages you want to display (See below).

To activate the Ticker, select **Options** from the top menu then choose **On-Screen Ticker Settings** and tick **Enabled**.



To add or edit text in the Ticker, select **Options** then select **On-Screen Ticker Settings** and **Edit Ticker**.



Tip: The Options On-Screen Ticker Settings menu can also be accessed by right-clicking your mouse on the middle video display (when visible). This is the suggested method, as it is the quickest way to access the Ticker features.

Messages can be separated by pressing Enter on your keyboard. Placing a # symbol at the beginning of a message will mark it as non-active, and it will not be displayed in the Ticker. This feature can be used to store common messages, and disable them if not required for a particular event.

Ticker text examples

~cake~ Happy Birthday! ~cake~ will give you:













Happy Hour 9pm to 10pm :) will give you:



Make your requests at the DJ booth ;) will give you:



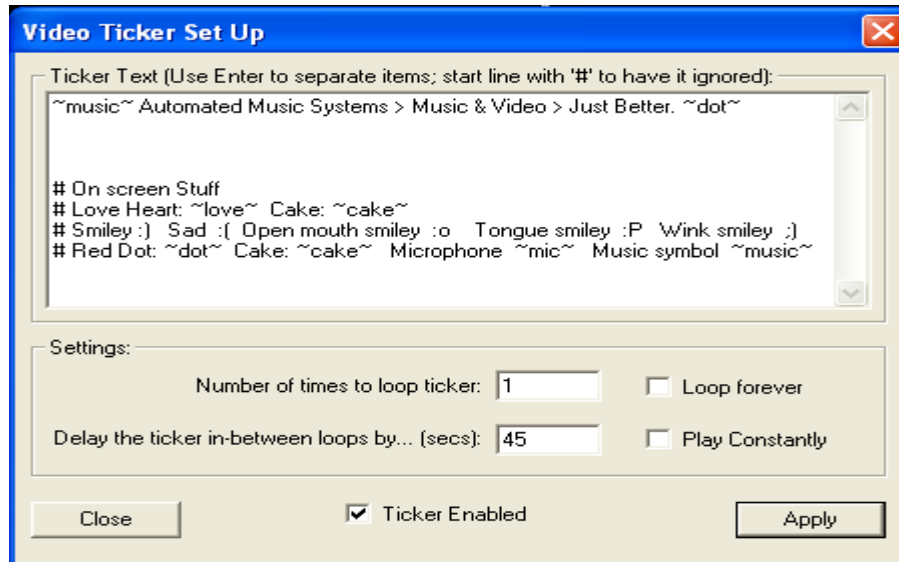
The following symbols can be added anywhere in your ticker text:

Ticker Code	Ticker Symbol
:)	
;)	
:(
:P	
:O	
~cake~	
~love~	
~dot~	
~mic~	
~music~	

ams music & video.just better.

Looping the Ticker

To run the ticker text in an endless loop, enable the **Loop Forever** check box. Un-checking the **Loop Forever** check box allows you to enter the number of times the ticker will loop, before disappearing. To re-enable the ticker after it has disappeared, click on the **Apply** button.



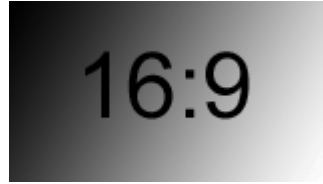
Adding a Delay to the Ticker looping

A delay can be applied so that the ticker text is not always running on the TV screens. This can be used to display the ticker text once, wait for the designated seconds to pass, and repeat the ticker display. To apply a delay, un-check the **Do Not Delay** check box, and enter the number of seconds to delay between ticker runs. Using this option, along with the number of loops option, allows you to repeat the ticker text any number of times, with a delay between each pass.

Slideshow

The Slideshow feature is used to display still images when a video is not playing or if you play a song with no video (an audio only song). You can display photos of people at your venue, advertise events, or simply show some desktop wallpapers. Images will retain their correct Aspect Ratio, and will not be stretched to fill your TV Screens.

Depending on the aspect ratio of your screens (see images below) you should design your images to fit. It's also important to take into account the ticker if you are using this as it will scroll along the bottom of the image(s) you are using. More details on designing your images is below in 'Designing your images section'.

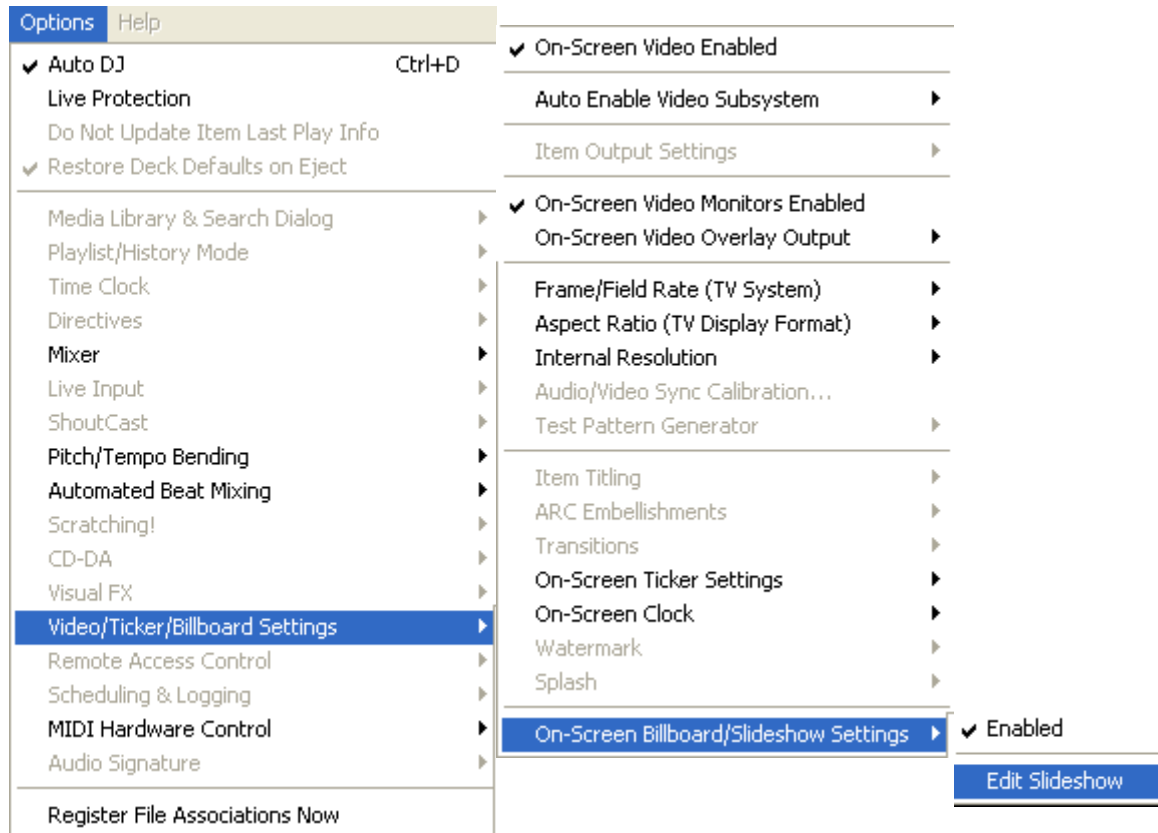


To have the Slideshow automatically start when no video content is being played, select **Options On-Screen Billboard/Slideshow Settings and Enabled.**

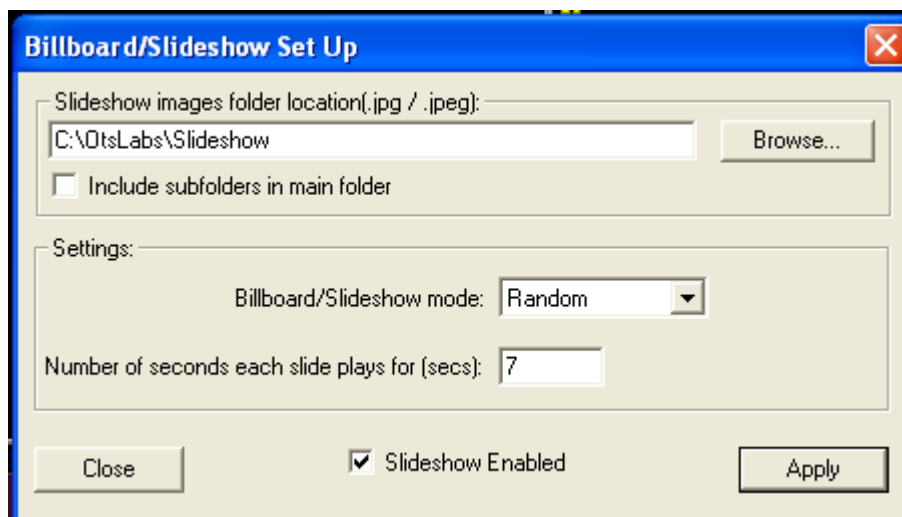
<ul style="list-style-type: none"> ✓ Auto DJ Ctrl+D Live Protection Do Not Update Item Last Play Info ✓ Restore Deck Defaults on Eject <hr/> Media Library & Search Dialog ▶ Playlist/History Mode ▶ Time Clock ▶ Directives ▶ Mixer ▶ Live Input ▶ ShoutCast ▶ Pitch/Tempo Bending ▶ Automated Beat Mixing ▶ Scratching! ▶ CD-DA ▶ Visual FX ▶ Video/Ticker/Billboard Settings ▶ Remote Access Control ▶ Scheduling & Logging ▶ MIDI Hardware Control ▶ Audio Signature ▶ <hr/> Register File Associations Now 	<ul style="list-style-type: none"> ✓ On-Screen Video Enabled <hr/> Auto Enable Video Subsystem ▶ <hr/> Item Output Settings ▶ <hr/> ✓ On-Screen Video Monitors Enabled On-Screen Video Overlay Output ▶ <hr/> Frame/Field Rate (TV System) ▶ Aspect Ratio (TV Display Format) ▶ Internal Resolution ▶ Audio/Video Sync Calibration... ▶ Test Pattern Generator ▶ <hr/> Item Titling ▶ ARC Embellishments ▶ Transitions ▶ On-Screen Ticker Settings ▶ On-Screen Clock ▶ Watermark ▶ Splash ▶ <hr/> On-Screen Billboard/Slideshow Settings ▶ 	<ul style="list-style-type: none"> ✓ Enabled <hr/> Edit Slideshow
---	---	---

Tip: the options Video menu can also be accessed by right-clicking your mouse on the middle video display (when visible). This is the suggested method as it is the quickest way to access the Video features.

To change the settings of the Slideshow, go to **Options Video/Ticker/Billboard Settings, On-Screen Billboard/Slideshow Settings, Edit Slideshow.**



This will then bring up the Billboard/Slideshow Set Up window.



ams music & video.just better.

Images should be stored in the 'Slideshow' folder. You can create additional folders like Monday, Tuesday, Wednesday, after 10pm, Sunday Lunch time etc so that you play the correct images when required (see Designing Your Images, below).

Click on the **Browse** button and select the appropriate folder. You can check the **Include subfolders in the main folder** check-box to include images within subfolders.

Note: The Slideshow feature supports .JPEG, or .JPG files. You can have an unlimited number of pictures in your Slideshow, and more pictures can be added to your images folder at any time. When more pictures are added, click on the Apply button to refresh the folder and include the added images to your Slideshow.

Random Play

To play your Slideshow images in a random order, select **Random** in the **Billboard/Slideshow mode** drop-down box.

Ordered Play

If you prefer to see your slides in the same order as they are listed in the selected folder, choose **Ordered** in the drop-down box. If you want to display your slides in a specific order, rename each picture file, placing a number at the beginning of the filename.

For example... 01FirstImage.jpg

02NextImage.jpg

Time between Slides

To change the time between slide changes, enter a value (in seconds) in the **Number of seconds each slide plays for** box.

Click on **Apply** to apply your settings and close the Slideshow Configuration window.

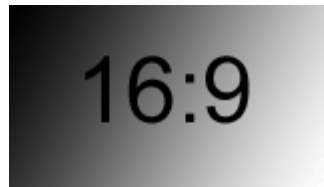
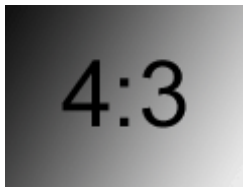
Designing Your Images

Creating images can be fun and easy but cannot be done on your AMS system. Below are the details of what you will need, the sizes you should use.

Most LCD and Plasma screens are widescreen and their aspect ratio is 16x9. Most older TV's and the monitor you are probably reading this on (supplied with your AMS system) will be 4x3 aspect ratio. If you have a mix of screens then design your images for 16x9.

Following are guidelines. Your images can be any size or aspect ratio however we all want them to look good. If you are using 16x9 ratio your images should be at least 1600 wide x 900 pixels high (next size up 3200x1800 etc). For 4x3 create images at least 800 wide x 600 high (next size up 1600x1200 etc).

Tip: Making templates can make it easy to reuse artwork. Simply create a background image, save it and then add the content. You could use a template for daily specials, regular events where the main background remains the same just the content changes.



Quality is important (so don't stretch pictures too much). There are a huge number of applications you can use to make your images. Paint (which comes free with Windows 98 onwards), Photoshop or Fireworks are a few.

One of the best, and free, applications is Paint.net. Download it from www.getpaint.net Once downloaded you will also need to download Microsoft.net for it to work. The installation will prompt you to do so and show you where to get it from.

We are also happy to advise or help create initial images. We also have an extensive range of images from the Breweries available for you at no cost.

Your own computer will have been set up by us with a desktop shortcut to the Slideshow images located on the Automated Music System computer. Once you have created your images simply drag and drop them from the folder they are in to this desktop shortcut folder, save any additional images you wish to add at a later date in the same place. You can also load them onto a USB memory stick pop them into the AMS music system and we'll log in and get them on the machine for you.

After the new images are on the AMS Music System you will need to refresh the folder they are in. Follow the instructions under the Slideshow section of this manual.